

Lom, Norway Thulite (zoisite) Candidate Infrared Study

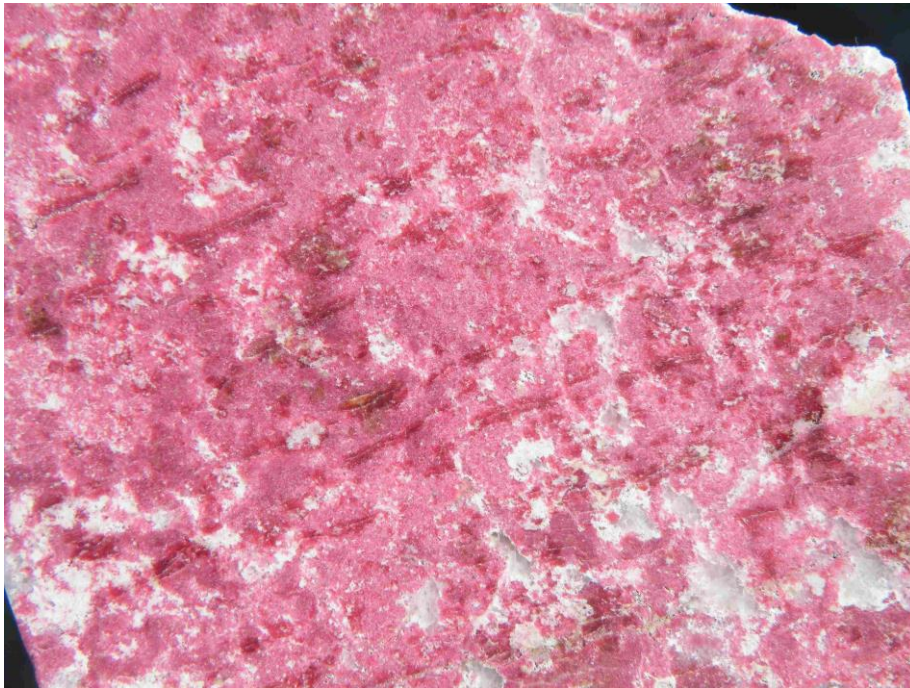
Donald Kasper 6-23-2017

Mindat reports the zoisite color variant thulite in a number of photos of specimens from Lom, Norway. I had the opportunity to purchase a Norway thulite candidate from a European mineral dealer. From the pink and peppered white look, it is clearly Lom material, which is distinctive.

Infrared spectroscopy confirms the white is quartz, the pink is overwhelmingly epidote, and trace zoisite exists in some, but not all scans. All scans have epidote. The zoisite shows up more when mixed with the quartz in combination graphs (2 scans), and showed up less with the epidote (1 scan). Only epidote was found in 3 scans.

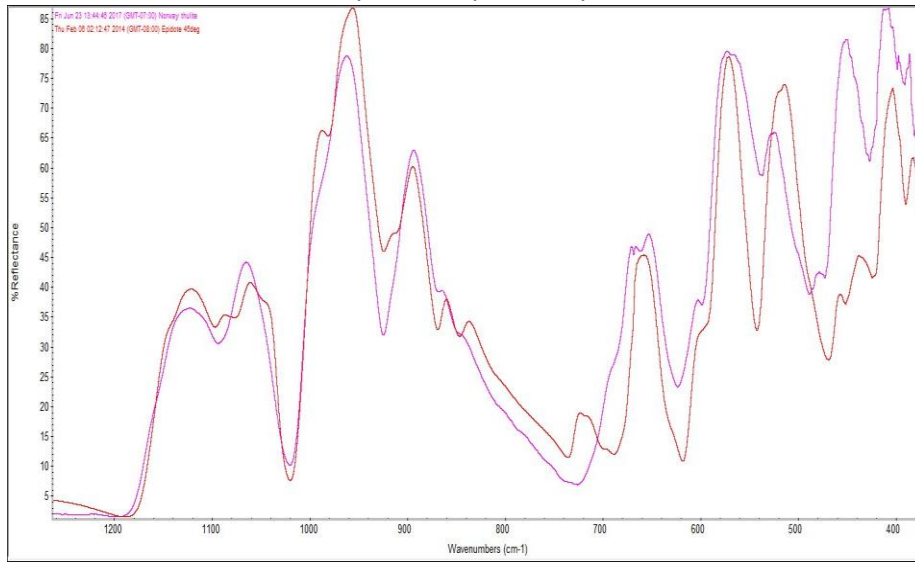
The specimen photo and graphs are attached.

Donald Kasper 6-23-2017

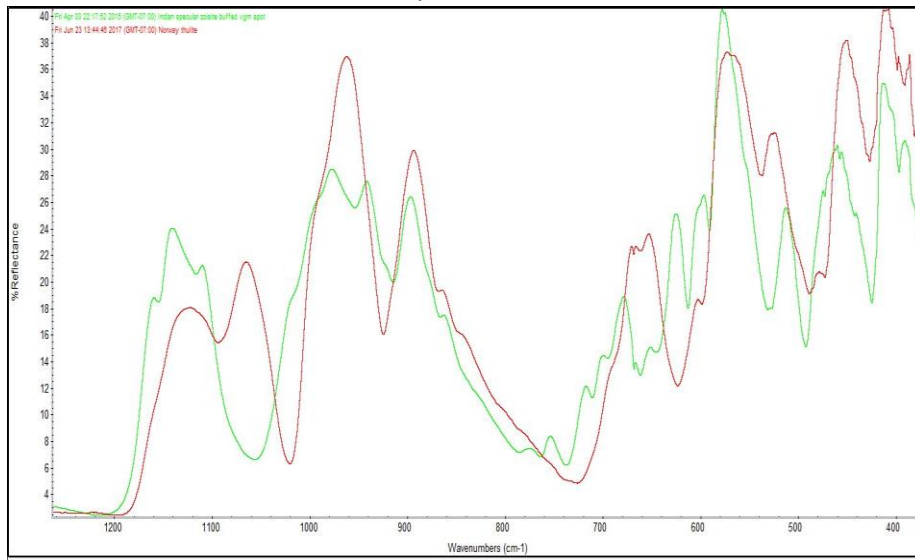


Lom, Norway mineral sample scanned on darkest pink areas.

Lom, Norway versus epidote crystal match.



Lom, Norway versus zoisite miss.

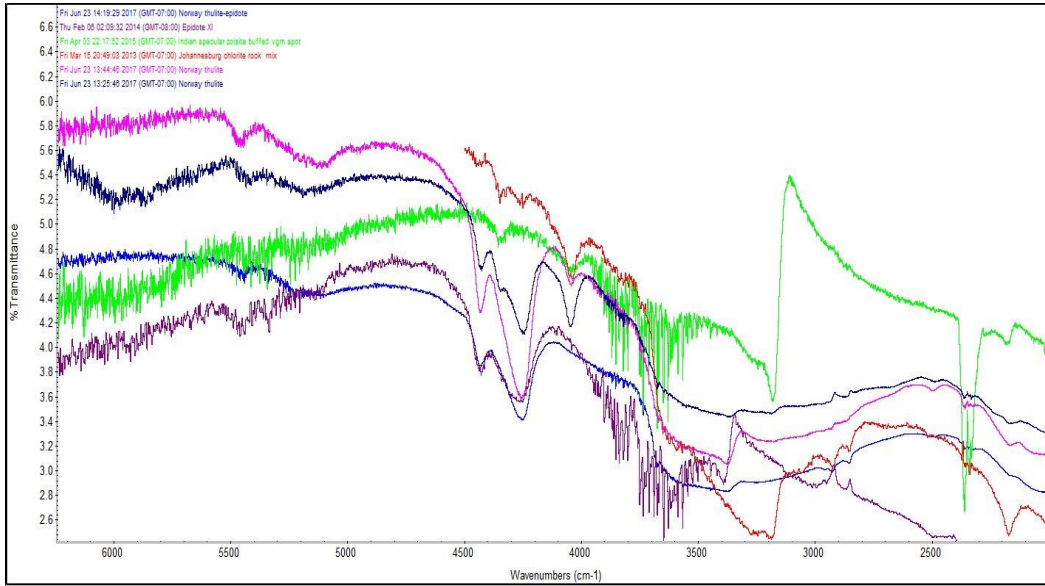


Donald Kasper 6-23-2017

Lom, Norway zoisite scans compared to an epidote crystal, and 2 zoisite specimens. Zoisite specimens are the top graphs, epidotes on the bottom, mixed in the middle.

Note the 4349 cm<sup>-1</sup> and 4048 cm<sup>-1</sup> zoisite bands.

Note the 4433 cm<sup>-1</sup> and deep 4253 cm<sup>-1</sup> epidote bands.



Donald Kasper 6-23-2017